

Lot 101 DP1267563 SOMME AVENUE EDMONDSON PARK STORMWATER DRAINAGE DESIGN



LOCALITY PLAN
NOT TO SCALE
COPYRIGHT OF NEARMAP

DRAWING INDEX			
SHEET No.	DWG. No.	DRAWING TITLE	REV.
01	S01-SW100	COVER SHEET & DRAWING INDEX	A
02	S01-SW201	EROSION & SEDIMENT CONTROL PLAN	A
03	S01-SW202	EROSION & SEDIMENT CONTROL DETAILS	A
04	S01-SW301	STORMWATER DRAINAGE DESIGN BASEMENT 02 PLAN BUILDING A + B	A
05	S01-SW302	STORMWATER DRAINAGE DESIGN LOWER GROUND FLOOR BUILDING A + B	A
06	S01-SW303	STORMWATER DRAINAGE DESIGN GROUND FLOOR PLAN BUILDING A + B	A
07	S01-SW304	STORMWATER DRAINAGE DESIGN ROOF LEVEL PLAN BUILDING A + B	A
08	S01-SW311	STORMWATER DRAINAGE DESIGN BASEMENT 04 PLAN BUILDING C	A
09	S01-SW312	STORMWATER DRAINAGE DESIGN GROUND FLOOR PLAN BUILDING C	A
10	S01-SW313	STORMWATER DRAINAGE DESIGN ROOF LEVEL PLAN BUILDING C	A
11	S01-SW401	STORMWATER DRAINAGE DESIGN DETAILS SHEET 01 OF 02	A
12	S01-SW402	STORMWATER DRAINAGE DESIGN DETAILS SHEET 02 OF 02	A
13	S01-SW501	STORMWATER GRADING DESIGN MUSIC CATCHMENT PLAN & DETAILS	A
14	S01-SW502	STORMWATER GRADING DESIGN OSD CATCHMENT PLAN & DETAILS	A

PREPARED BY


SGC
S&G CONSULTANTS PTY LTD
SUITE 311, LEVEL 3
480 PACIFIC HIGHWAY
ST. LEONARDS, N.S.W. 2065
T: +61 2 8883 4239
Email: office@sgce.com.au
Web: www.sgce.com.au

ARCHITECT

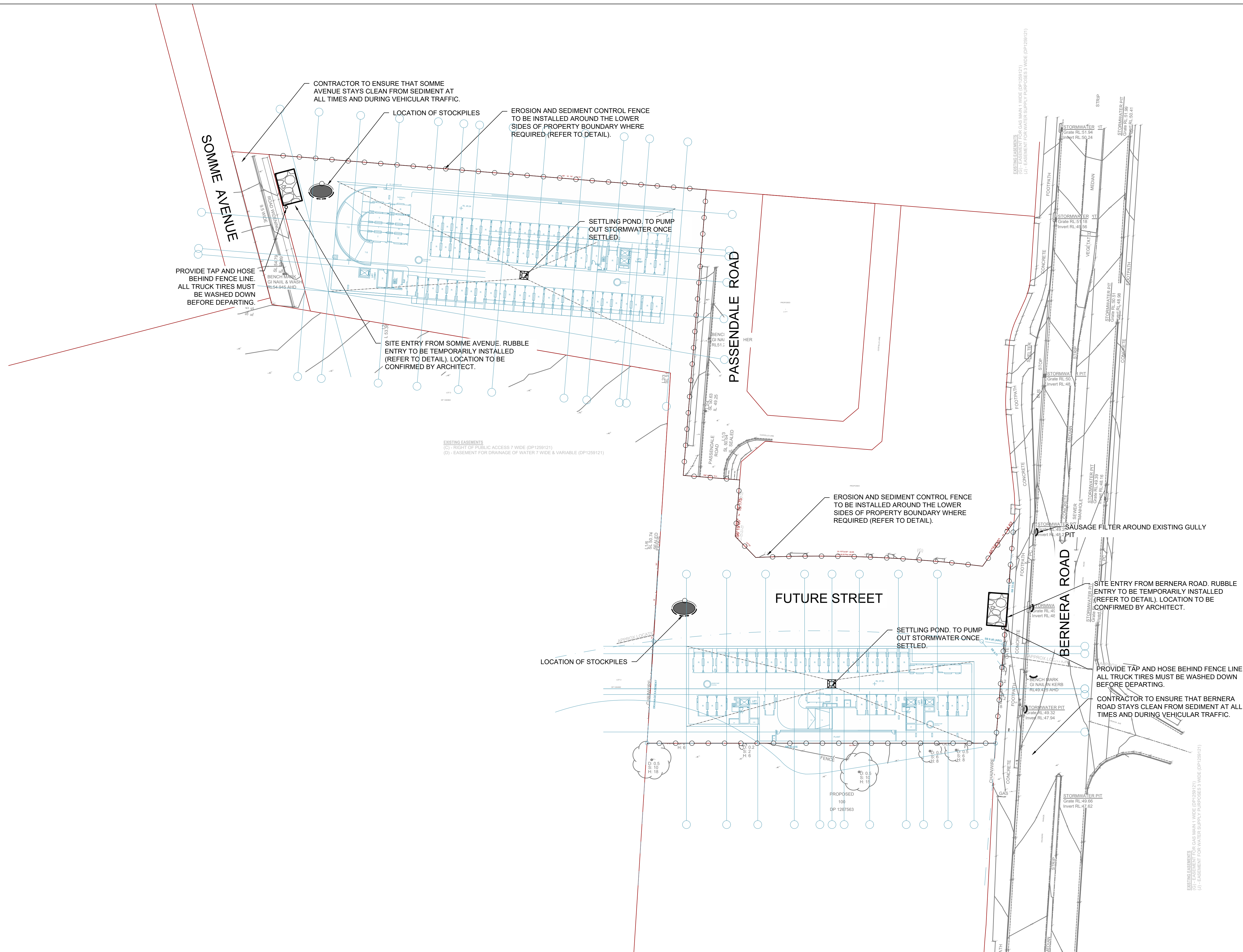
stanisic architects

CLIENT

CROATIA
88
DEVELOPMENT
PTY
LTD

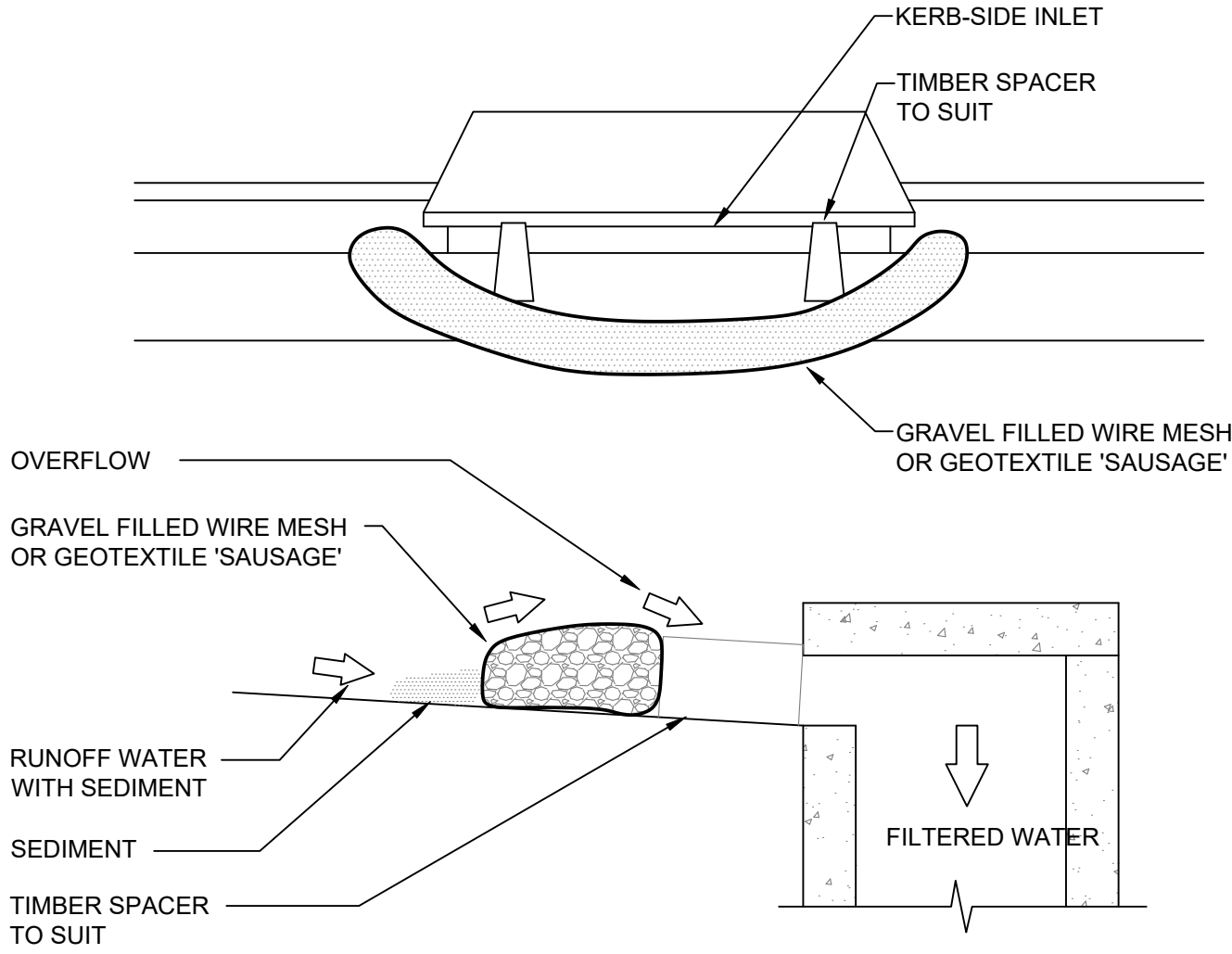
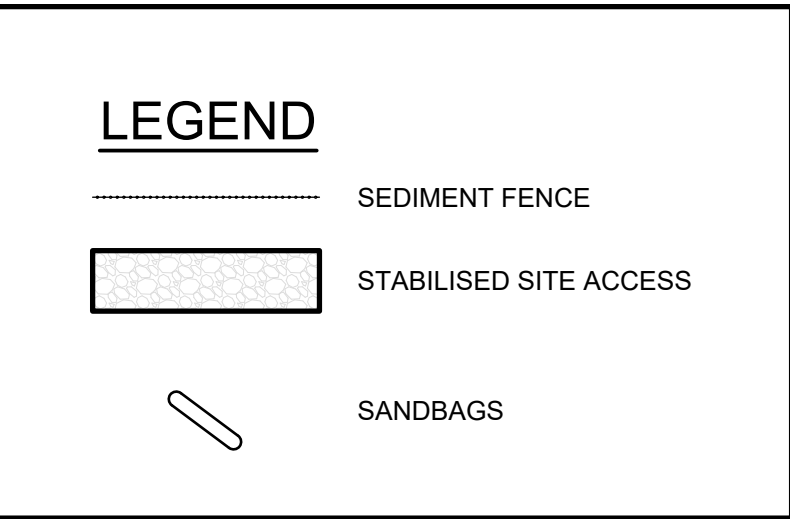
LGA

**LIVERPOOL
CITY
COUNCIL**

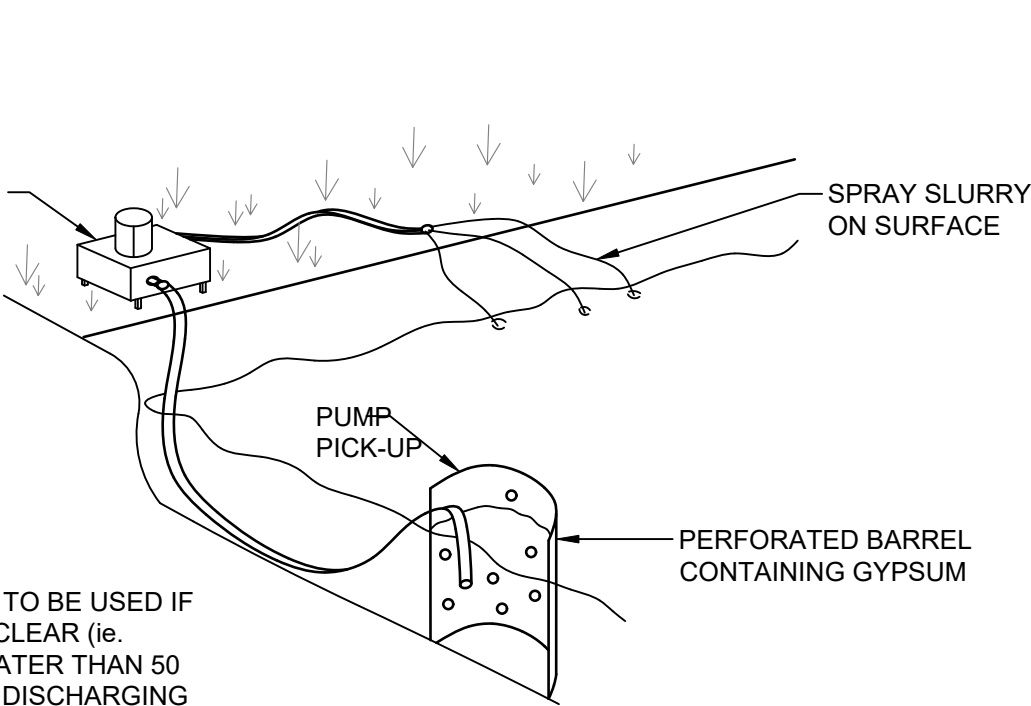
[illegible]

EROSION & SEDIMENTATION CONTROL NOTES

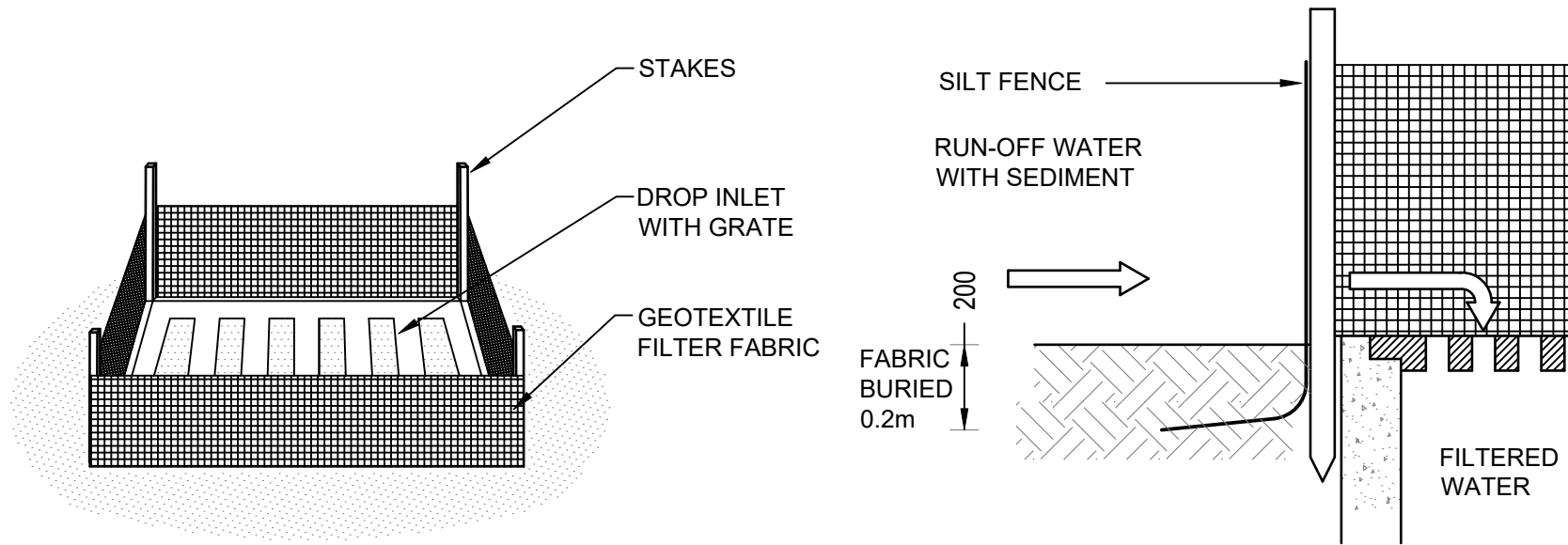
1. CONTRACTOR SHALL PROVIDE SEDIMENT FENCING MATERIAL DURING CONSTRUCTION TO THE LOW SIDE OF THE WORKS. TIE SEDIMENT FENCING MATERIAL TO CYCLONE WIRE SECURITY FENCE. SEDIMENT CONTROL FABRIC SHALL BE AN APPROVED MATERIAL (EG. HUMES PROPEX SILT STOP) STANDING 300mm ABOVE GROUND & EXTENDING 150mm BELOW GROUND.
2. EXISTING DRAINS LOCATED WITHIN THE SITE SHALL ALSO BE ISOLATED BY SEDIMENT FENCING MATERIAL.
3. NO PARKING OR STOCKPILING OF MATERIALS IS PERMITTED ON THE LOWER SIDE OF THE SEDIMENT FENCE.
4. GRASS VERGES SHALL BE MAINTAINED AS MUCH AS PRACTICAL TO PROVIDE A BUFFER ZONE TO THE CONSTRUCTION SITE.
5. CONSTRUCTION ENTRY/EXIT SHALL BE VIA THE LOCATION NOTED ON THE DRAWING. CONTRACTOR SHALL ENSURE ALL DROPPABLE SOIL & SEDIMENT IS REMOVED PRIOR TO CONSTRUCTION TRAFFIC EXITING SITE. CONTRACTOR SHALL ENSURE ALL CONSTRUCTION TRAFFIC ENTERING & LEAVING THE SITE DO SO IN A FORWARD DIRECTION.



GRAVEL INLET FILTER (SAUSAGE)
NOT TO SCALE



1. FLOCCULATION TO BE USED IF WATER IS NOT CLEAR (ie. SEDIMENT GREATER THAN 50 mg/L) PRIOR TO DISCHARGING FROM TEMPORARY PUMP OUT
2. FOR RATES & AGENTS SEE APPENDIX E OF NEW SOUTH WALES DEPARTMENT OF HOUSING "MANAGING URBAN STORMWATER SOILS & CONSTRUCTION".



GEOTEXTILE INLET FILTER
NOT TO SCALE

CONSTRUCTION NOTES

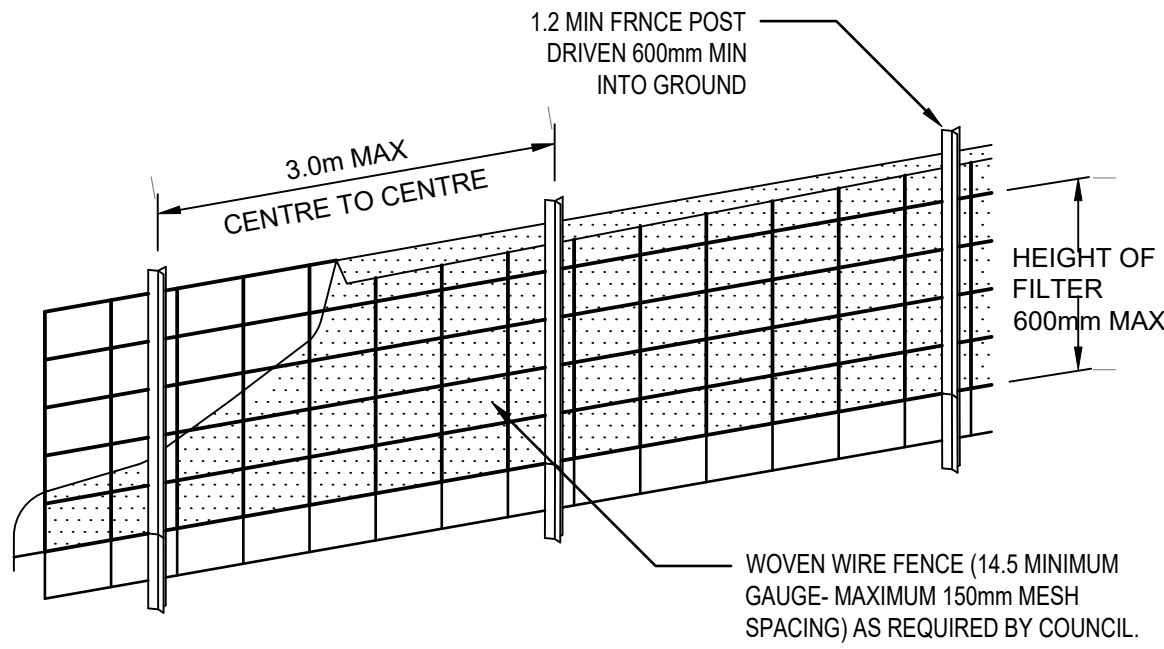
- FABRICATE A SLEEVE MADE FROM GEOTEXTILE OR WIRE MESH LONGER THAT THE LENGTH OF THE INLET PIT
- FILL THE SLEEVE WITH 25mm TO 50mm GRAVEL
- FORM AN ELLIPTICAL CROSS-SECTION OF THE KERB INLET LEAVING A 100mm GAP AT THE TOP TO ACT AS AN EMERGENCY SPILLWAY
- MAINTAIN THE OPENING WITH SPACER BLOCKS
- FORM A SEAL WITH THE KERBING AND PREVENT SEDIMENT BYPASSING THE FILTER
- FIT TO ALL KERB INLETS AT SAG POINTS

GENERAL NOTES

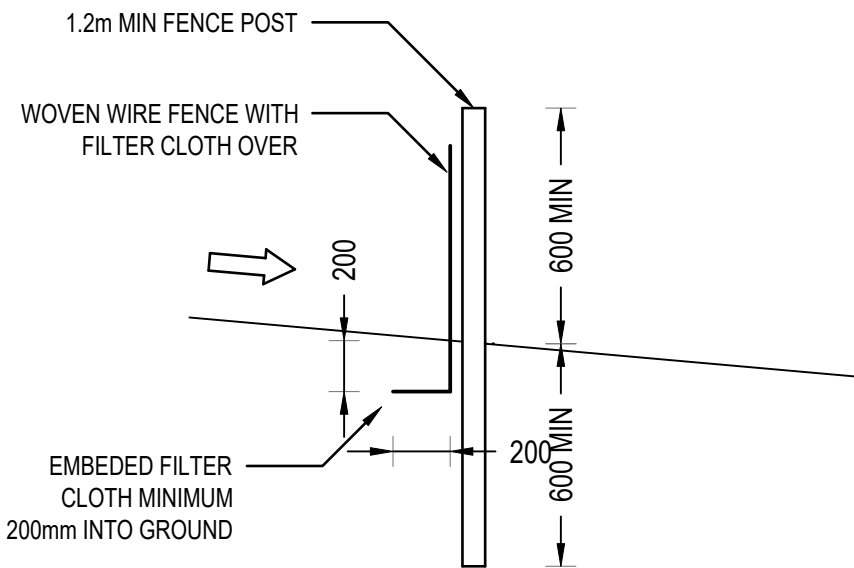
1. THIS PLAN IS A CONCEPT PLAN ONLY FOR STORMWATER DISPOSAL & EROSION CONTROL. IT IS NOT SUITABLE FOR CONSTRUCTION. THIS PLAN SHOULD BE ADAPTED BY THE BUILDER DURING DEMOLITION, EXCAVATION & CONSTRUCTION PHASES TO ENSURE ADEQUATE PERFORMANCE.
2. ALL DRAINAGE LAYOUT & DETAILS ARE DIAGRAMMATIC & INDICATIVE ONLY. ACTUAL LOCATION, SIZES, LEVELS & GRADES MAY ALTER WHEN DETAIL DESIGN WORKS ARE DOCUMENTED.

CLAY SOILS

- A SYSTEM SHALL BE INSTALLED TO EITHER:
1. TRANSPORT STORMWATER RUNOFF WITH SUSPENDED SOLIDS FROM SITE VIA PUMP TRUCKS.
2. TREAT THE STORMWATER RUNOFF WITH SUSPENDED SOLIDS SO THE DISCHARGE WATER QUALITY TO COUNCIL STORMWATER DRAINAGE SYSTEM HAS A MAXIMUM CONCENTRATION OF SUSPENDED SOLIDS THAT DOES NOT EXCEED 50 MILLIGRAMS PER LITRE IN ACCORDANCE WITH THE PROTECTION OF THE ENVIRONMENT OPERATION ACT (POEO 1997) AND SHALL BE APPROVED BY LOCAL COUNCIL



DIAGRAMMATIC VIEW

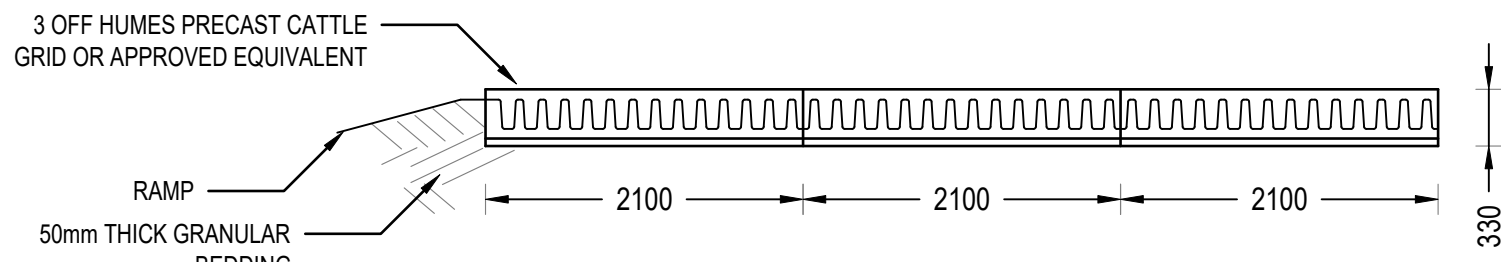
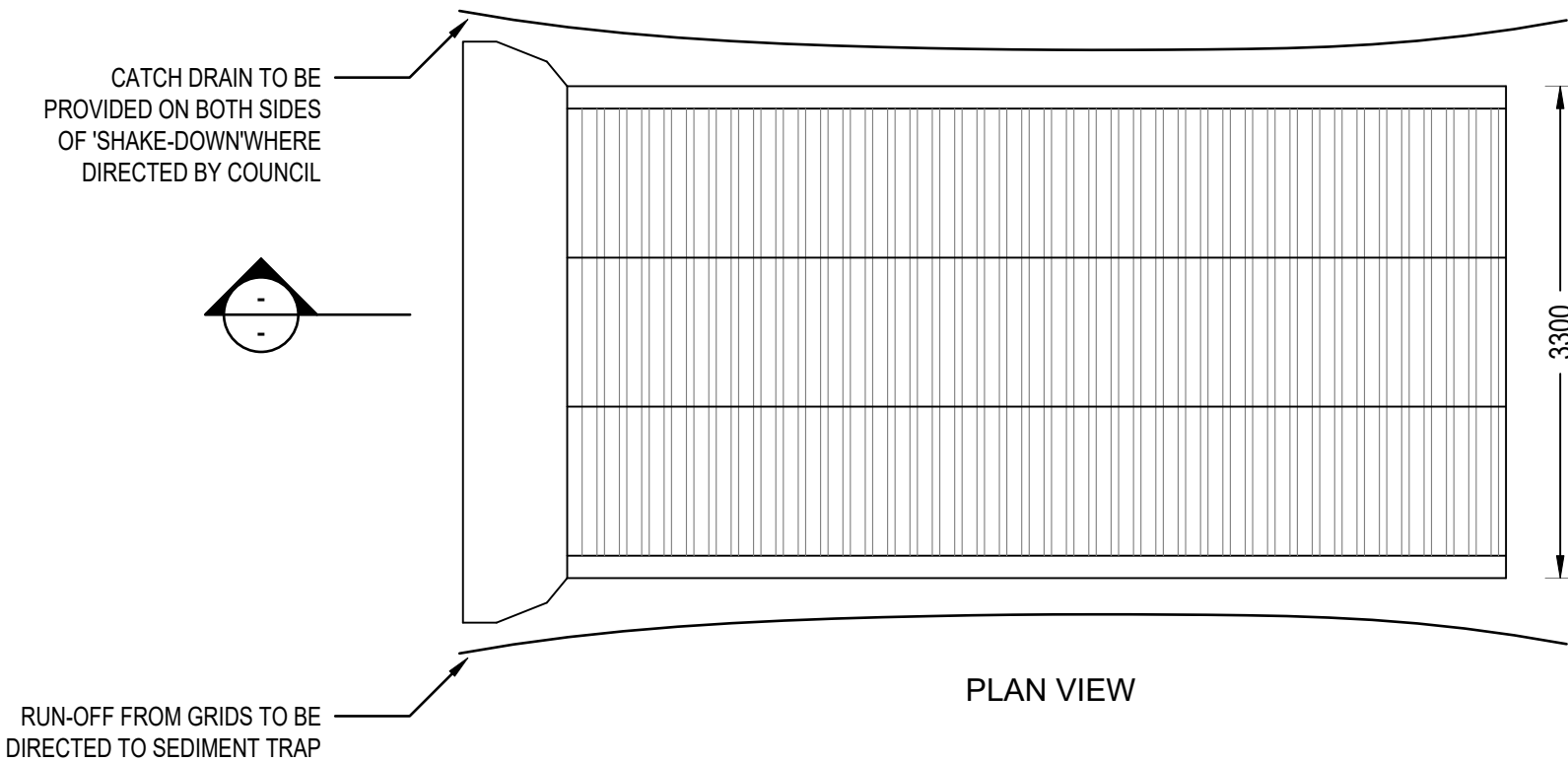


TYPICAL SECTION

SEDIMENT FENCE
NOT TO SCALE

GEOTEXTILE INLET FILTER

GEOTEXTILE INLET FILTER IS PLACED IN EVERY PIT WITHIN THE SITE TO ENSURE THE RUNOFF WATER DURING CONSTRUCTION NOT ENTER THE PITS.



TYPICAL SECTION
'CATTLE GRID' ALTERNATIVE
TEMPORARY CONSTRUCTION EXIT
NOT TO SCALE

Reference Coordination Drawing					Quality Control		
Discipline	Drawing Title and Number	Date	Rev.		DRAWN	DATE	
ARCH					ES	23.02.24	
STRUCT					CHECKED	DATE	
MECH					SH	23.02.24	
ELEC					DESIGNED	DATE	
HYD					ES	23.02.24	
FIRE					VERIFIED	DATE	
LANDS					SH	23.02.24	
CIVIL					APPROVED	DATE	
SURVEY					SH	23.02.24	

1-preliminary

2-development application

3-construction certificate

4-tender

5-construction

6-other

ENGINEERS AUSTRALIA

Chartered Professional Engineer

MEMBER

WARNING: THE DESIGNS, DRAWINGS, SPECIFICATIONS AND THE COPYRIGHT HEREIN REMAIN THE SOLE INTELLECTUAL PROPERTY OF S&G CONSULTANTS PTY LTD AND MUST NOT BE USED, COPIED, ALTERED OR REPRODUCED WHOLLY OR IN PART IN ANY FORM WITHOUT THE WRITTEN CONSENT OF S&G CONSULTANTS PTY LTD

DIMENSIONS NOT SHOWN TO BE CHECKED ON SITE. DO NOT SCALE OF THIS DRAWING. POSITIONS OF AUTHORITIES MAINS AND/OR EXISTING SERVICES ARE TO BE CHECKED PRIOR TO COMMENCEMENT OF WORK. REPORT ANY DISCREPANCIES TO THE CONSULTING ENGINEER FOR DECISION/CLARIFICATION BEFORE PROCEEDING WITH THE WORK. THIS DRAWING IS TO BE READ IN CONJUNCTION WITH THE SPECIFICATIONS AND OTHER CONSULTANTS' DRAWINGS.

Scales

Client

CROATIA 88
DEVELOPMENT
PTY LTD

Architect

stanisic architects

SGC

S&G CONSULTANTS PTY LTD

SUITE 311, LEVEL 3

480 PACIFIC HIGHWAY

ST. LEONARDS, N.S.W. 2065

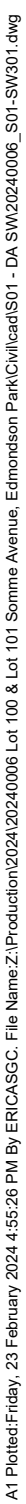
T: +61 2 8883 4239

Email: office@sgce.com.au

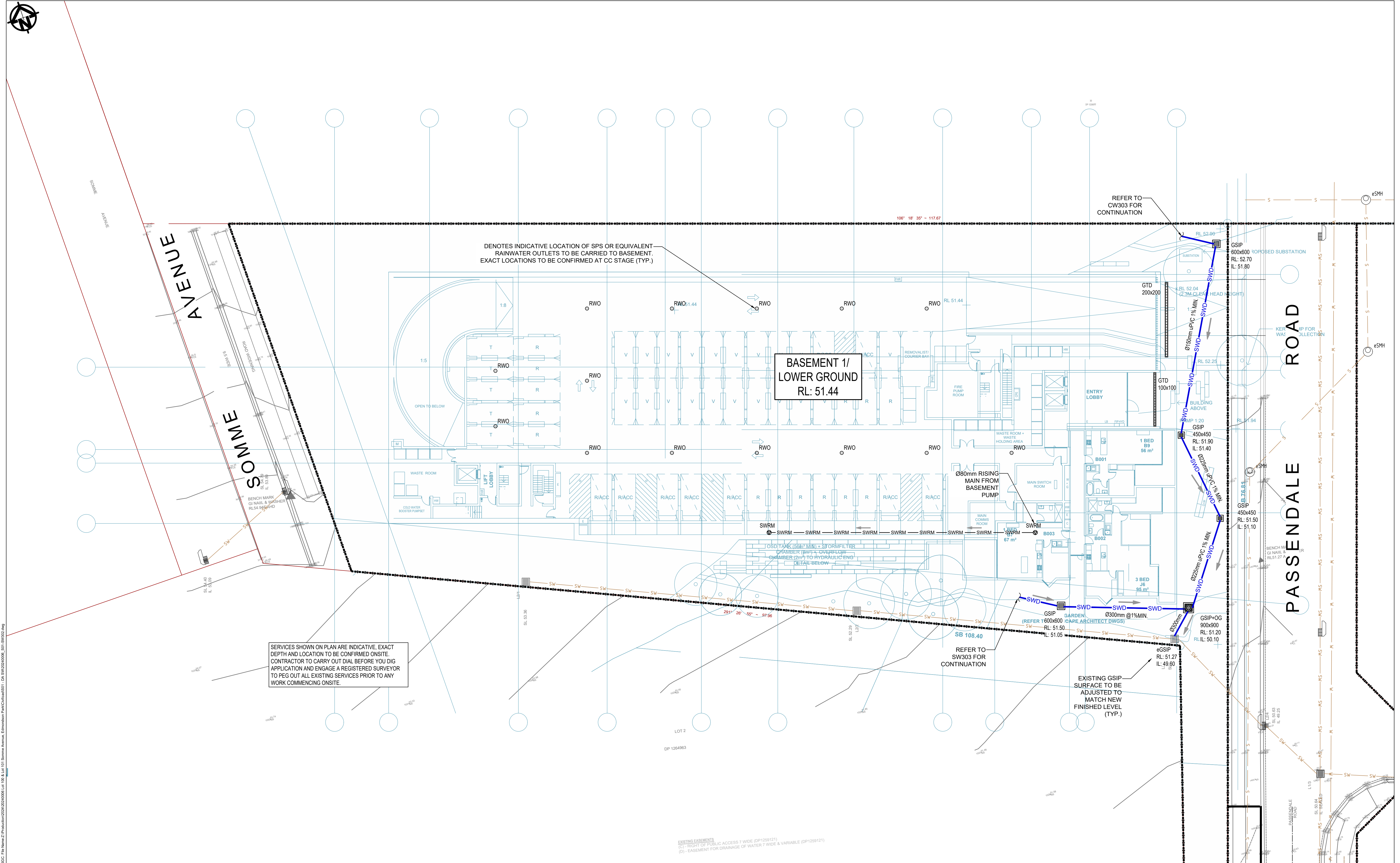
Web: www.sgce.com.au


A.B.N. 21 118 222 530

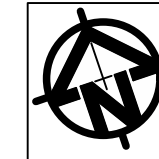
PROJECT				Status	
Lot 101 DP1267563 SOMME AVENUE				PRELIMINARY	
EDMONDSON PARK				NOT FOR CONSTRUCTION	
STORMWATER DRAINAGE DESIGN				Drawing Title	
				EROSION & SEDIMENT CONTROL DETAILS	
Grid	Datum	Sheet	Project No.	Set No.	Drg No.
-	A.H.D.	03	20240006	S01-SW202	A



Status	PRELIMINARY		
	NOT FOR CONSTRUCTION		
Drawing Title	STORMWATER DRAINAGE DESIGN BASEMENT 02 PLAN BUILDING A + B		
Project No.	Set No. - Drg No.	Revision No.	
20240006	S01-SW301	A	



				Reference Coordination Drawing				Quality Control				ENGINEERS AUSTRALIA Chartered Professional Engineer MEMBER				Scales				Client				Architect				<div><div>S&G CONSULTANTS PTY LTD SUITE 311, LEVEL 3 480 PACIFIC HIGHWAY ST. LEONARDS, N.S.W. 2065 T: +61 2 8883 4239 Email: office@sgce.com.au Web: www.sgce.com.au</div><div>A.B.N. 21 118 222 530</div></div>				PROJECT				Status																																																																																																																																																																																																																																																																																																																																																																																																																																																																																																																																																																																																																																																																																																																																																																																																																																																																																																																																																																																																																																																																																																																																																																																																																																																																																																																																																																																																																																																																																																																																																																																																																																																																																																																																																																																																																																																																																																																																																																																																																																																																																																																																																																																																																																																																																																																																							
																CROATIA 88 DEVELOPMENT PTY LTD				stanisic architects				Lot 101 DP1267563 SOMME AVENUE EDMONDSON PARK STORMWATER DRAINAGE DESIGN LOWER GROUND FLOOR BUILDING A + B								PRELIMINARY NOT FOR CONSTRUCTION																																																																																																																																																																																																																																																																																																																																																																																																																																																																																																																																																																																																																																																																																																																																																																																																																																																																																																																																																																																																																																																																																																																																																																																																																																																																																																																																																																																																																																																																																																																																																																																																																																																																																																																																																																																																																																																																																																																																																																																																																																																																																																																																																																																																																																																																																																																																											



A:\Projects\2024\1267563\1267563_01.dwg
1- preliminary
2- development application
3- construction certificate
4- tender

Reference Coordination Drawing					Quality Control	
Discipline	Drawing Title and Number	Date	Rev.		DRAWN	DATE
ARCH					ES	23.02.24
STRUCT					CHECKED	DATE
MECH					SH	23.02.24
ELEC					DESIGNED	DATE
HYD					ES	23.02.24
FIRE					VERIFIED	DATE
LANDS					SH	23.02.24
CIVIL					APPROVED	DATE
SURVEY					SH	23.02.24

Issuer internal sequence and revision history				
Issue	Last revision title	By	Date	Status
A	DEVELOPMENT APPLICATION	ES	23.02.24	02
P01	PERLIMINARY ISSUE	ES	22.02.24	01
Issue	Last revision title	By	Date	Status
1-preliminary	2-development application	3-construction certificate	6-other	

Quality Control		MEMBER
DISCIPLINE	DATE	
ARCH	23.02.24	ENGINEERS AUSTRALIA Chartered Professional Engineer
STRUCT	23.02.24	
MECH	23.02.24	MEMBER
ELEC	23.02.24	
HYD	23.02.24	MEMBER
FIRE	23.02.24	
LANDS	23.02.24	MEMBER
CIVIL	23.02.24	
SURVEY	23.02.24	MEMBER
	23.02.24	

Scales	
0m	2 4 6 8 10
SCALE 1:200 ON ORIGINAL SIZE	

Client	
CROATIA 88	DEVELOPMENT
PTY LTD	

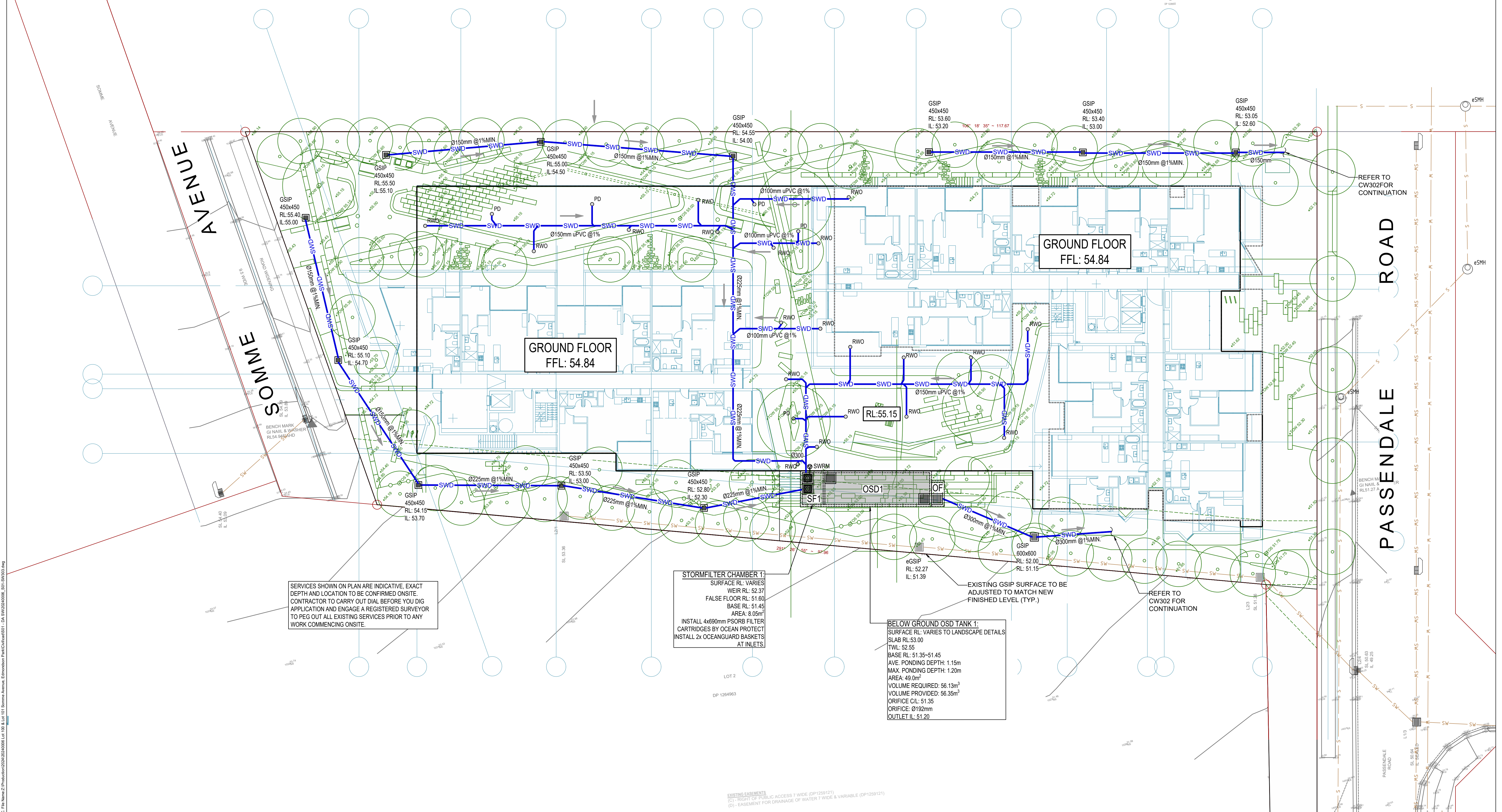
Architect	
stanisic architects	

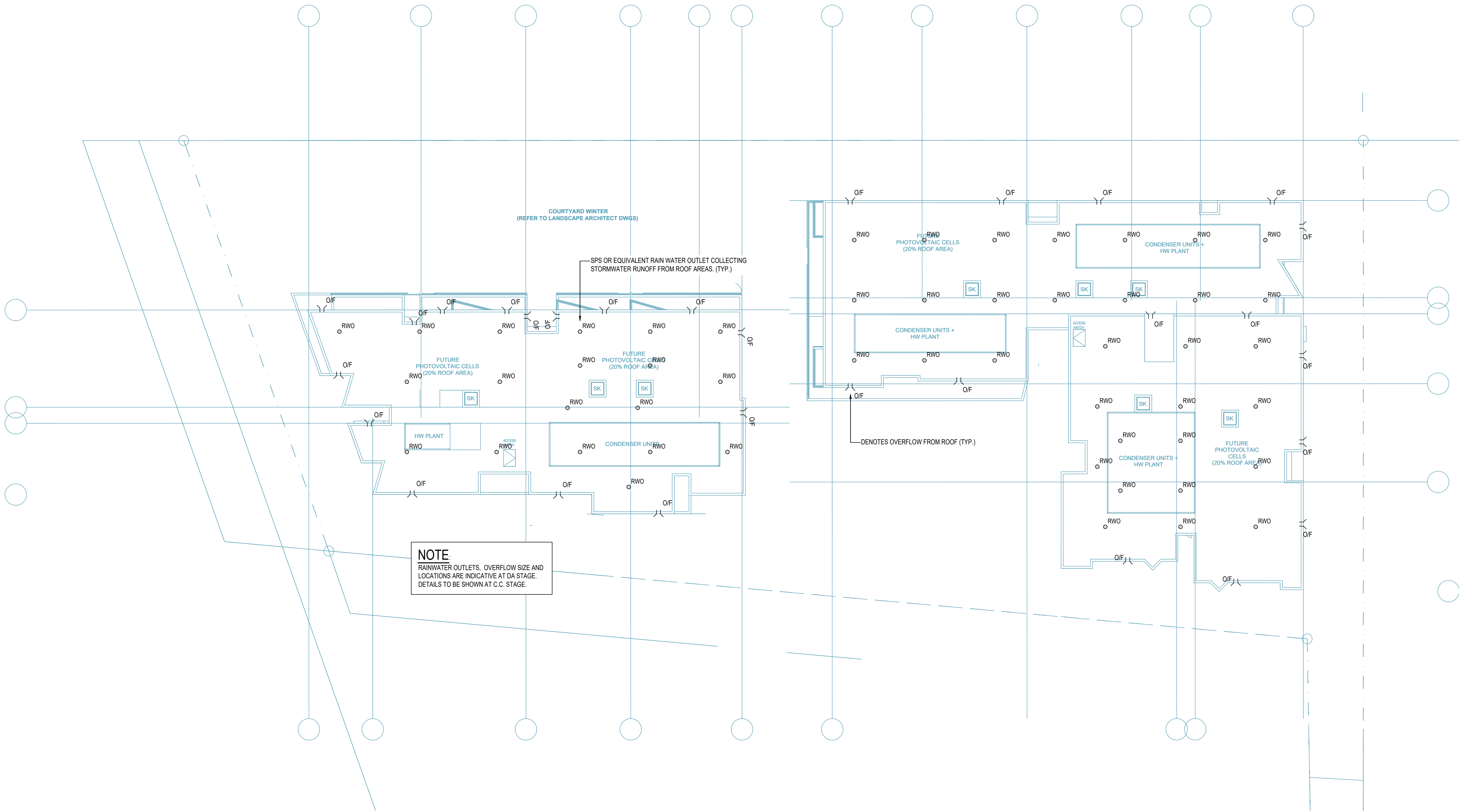
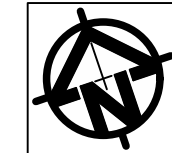


S&G CONSULTANTS PTY LTD
SUITE 311, LEVEL 3
480 PACIFIC HIGHWAY
ST. LEONARDS, N.S.W. 2065
T: +61 2 8883 4239
Email: office@sgce.com.au
Web: www.sgce.com.au

A.B.N. 21 118 222 530


PROJECT			Status		
Lot 101 DP1267563 SOMME AVENUE	EDMONDSON PARK	STORMWATER DRAINAGE DESIGN	PRELIMINARY	NOT FOR CONSTRUCTION	
Drawing Title			Project No.		
STORMWATER DRAINAGE DESIGN			20240006	Set No. - Drg No.	S01-SW303
			Revision No.		
			A		





Reference Coordination Drawing				
Discipline	Drawing Title and Number	Date	Rev.	
ARCH				
STRUCT				
MECH				
ELEC				
HYD				
FIRE				
LANDS				
CIVIL				
SURVEY				

Quality Control				
DRAWN	DATE			
ES	23.02.24			
CHECKED	DATE			
SH	23.02.24			
DESIGNED	DATE			
ES	23.02.24			
VERIFIED	DATE			
SH	23.02.24			
APPROVED	DATE			
SH	23.02.24			




ENGINEERS
AUSTRALIA
Chartered Professional Engineer
MEMBER

WARNING: THE DESIGNS, DRAWINGS, SPECIFICATIONS AND THE COPYRIGHT HEREIN REMAIN THE SOLE INTELLECTUAL PROPERTY OF S&G CONSULTANTS PTY LTD AND MUST NOT BE USED, COPIED, ALTERED OR REPRODUCED WHOLLY OR IN PART IN ANY FORM WITHOUT THE WRITTEN CONSENT OF S&G CONSULTANTS PTY LTD.

DIMENSIONS NOT SHOWN TO BE CHECKED ON SITE. DO NOT SCALE OF THIS DRAWING. POSITIONS OF AUTHORITIES MAINS AND/OR EXISTING SERVICES ARE TO BE CHECKED PRIOR TO COMMENCEMENT OF WORK. REPORT ANY DISCREPANCIES TO THE CONSULTING ENGINEER FOR DECISION/CLARIFICATION BEFORE PROCEEDING WITH THE WORK. THIS DRAWING IS TO BE READ IN CONJUNCTION WITH THE SPECIFICATIONS AND OTHER CONSULTANTS' DRAWINGS.

Scales



0m 2 4 6 8 10
SCALE 1:200 ON ORIGINAL SIZE

Client

CROATIA 88
DEVELOPMENT
PTY LTD

Architect

stanisic architects



S&G CONSULTANTS PTY LTD
SUITE 311, LEVEL 3
480 PACIFIC HIGHWAY
ST. LEONARDS, N.S.W. 2065
T: +61 2 8883 4239
Email: office@sgce.com.au
Web: www.sgce.com.au

A.B.N. 21 118 222 530

PROJECT

Lot 101 DP1267563 SOMME AVENUE
EDMONDSON PARK
STORMWATER DRAINAGE DESIGN

Status

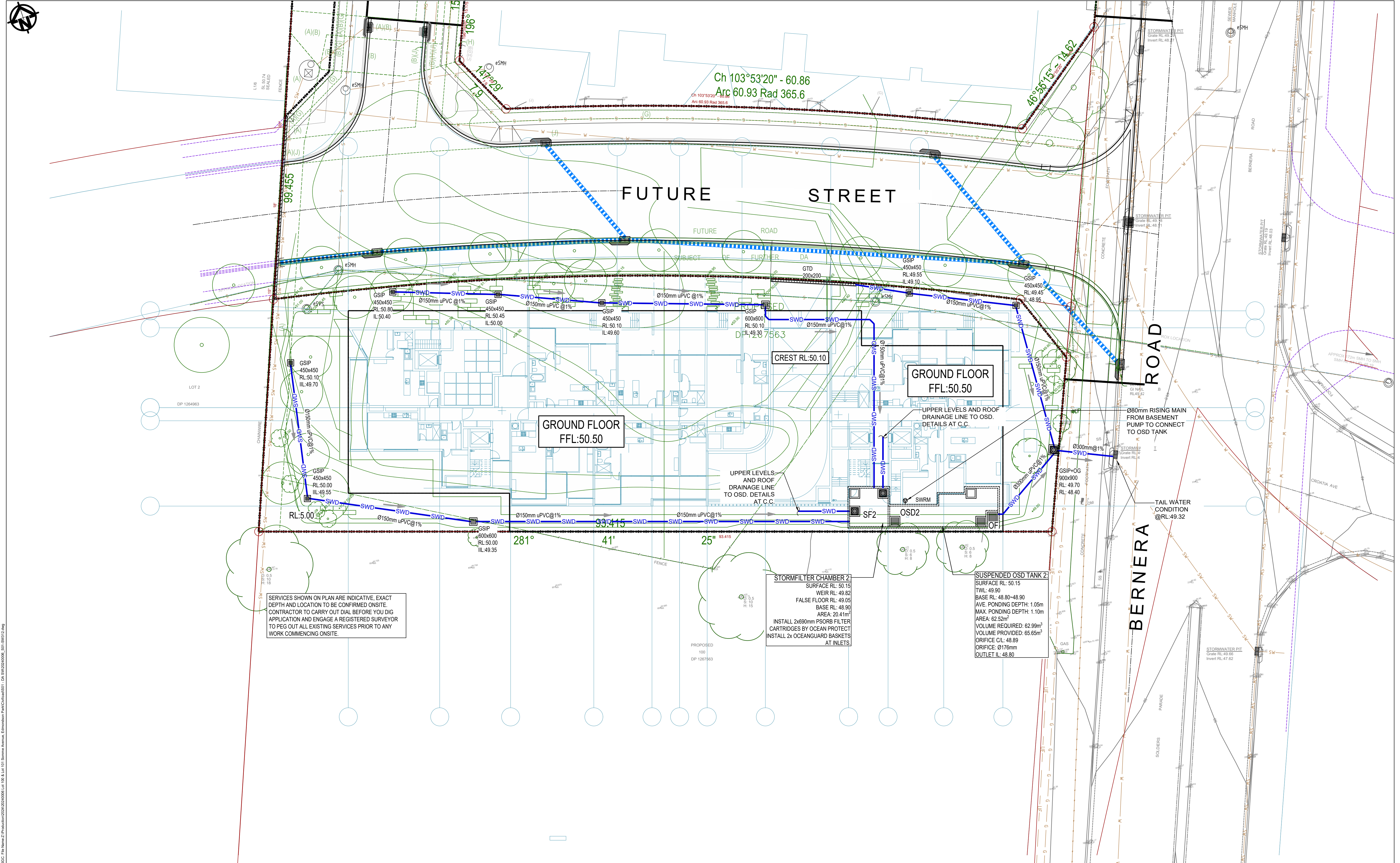
PRELIMINARY
NOT FOR CONSTRUCTION

Drawing Title

STORMWATER DRAINAGE DESIGN
ROOF LEVEL PLAN
BUILDING A + B

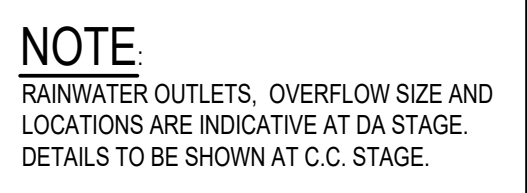
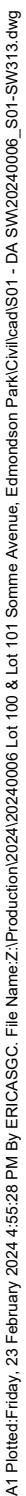
Grid	Datum	Sheet
-	A.H.D.	07

Project No.	Set No. - Drg No.	Revision No.
20240006	S01-SW304	A


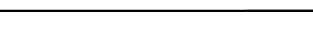


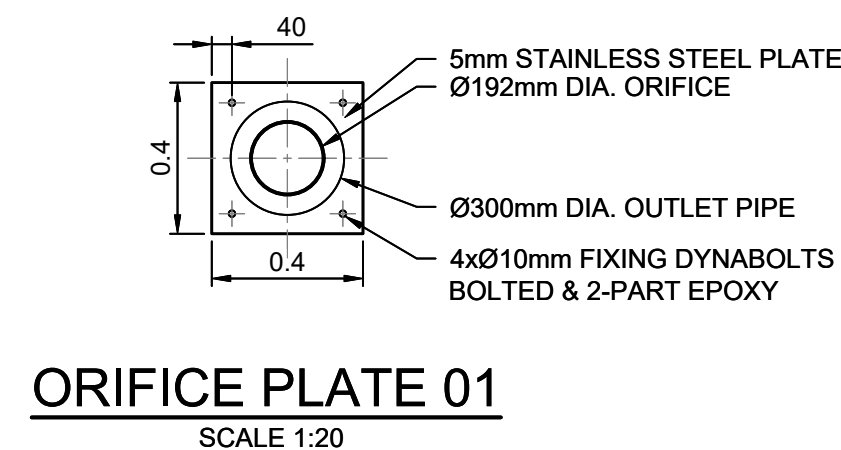
A: Project File - 21 February 2024 4:50:24 PM By: ENG/SGC The Name: Z:\Production\2024\20240006 Lot 101 & Lot 101 Bernera Avenue, Edmondson Park\DWG\DWG101 - DA SW312.dwg

<div>Reference Coordination Drawing</div> <table><tr><th>Discipline</th><th>Drawing Title and Number</th><th>Date</th><th>Rev.</th></tr><tr><td>ARCH</td><td>STRUCT</td><td></td><td></td></tr><tr><td>MECH</td><td></td><td></td><td></td></tr><tr><td>ELEC</td><td></td><td></td><td></td></tr><tr><td>HYD</td><td></td><td></td><td></td></tr><tr><td>FIRE</td><td></td><td></td><td></td></tr><tr><td>LANDS</td><td></td><td></td><td></td></tr><tr><td>CIVIL</td><td></td><td></td><td></td></tr><tr><td>SURVEY</td><td></td><td></td><td></td></tr></table>				Discipline	Drawing Title and Number	Date	Rev.	ARCH	STRUCT			MECH				ELEC				HYD				FIRE				LANDS				CIVIL				SURVEY				<div>Quality Control</div> <table><tr><td>DRAWN</td><td>DATE</td></tr><tr><td>ES</td><td>23.02.24</td></tr><tr><td>CHECKED</td><td>DATE</td></tr><tr><td>SH</td><td>23.02.24</td></tr><tr><td>DESIGNED</td><td>DATE</td></tr><tr><td>ES</td><td>23.02.24</td></tr><tr><td>VERIFIED</td><td>DATE</td></tr><tr><td>SH</td><td>23.02.24</td></tr><tr><td>APPROVED</td><td>DATE</td></tr><tr><td>SH</td><td>23.02.24</td></tr></table>				DRAWN	DATE	ES	23.02.24	CHECKED	DATE	SH	23.02.24	DESIGNED	DATE	ES	23.02.24	VERIFIED	DATE	SH	23.02.24	APPROVED	DATE	SH	23.02.24	<div>ENGINEERS AUSTRALIA</div> <div>Chartered Professional Engineer</div> <div>MEMBER</div> <div>WARNING: THE DESIGNS, DRAWINGS, SPECIFICATIONS AND THE COPYRIGHT HEREIN REMAIN THE SOLE INTELLECTUAL PROPERTY OF S&G CONSULTANTS PTY LTD AND MUST NOT BE USED, COPIED, ALTERED OR REPRODUCED WHOLLY OR IN PART IN ANY FORM WITHOUT THE WRITTEN CONSENT OF S&G CONSULTANTS PTY LTD.</div> <div>DIMENSIONS NOT SHOWN TO BE CHECKED ON SITE. DO NOT SCALE OF THIS DRAWING. POSITIONS OF AUTHORITIES MAINS AND/OR EXISTING SERVICES ARE TO BE CHECKED PRIOR TO COMMENCEMENT OF WORK. REPORT ANY DISCREPANCIES TO THE CONSULTING ENGINEER FOR DECISION/CLARIFICATION BEFORE PROCEEDING WITH THE WORK. THIS DRAWING IS TO BE READ IN CONJUNCTION WITH THE SPECIFICATIONS AND OTHER CONSULTANTS' DRAWINGS.</div>				<div>Scales</div> <div>0m 2 4 6 8 10</div> <div>SCALE 1:200 ON ORIGINAL SIZE</div>				<div>Client</div> <div>CROATIA 88</div> <div>DEVELOPMENT</div> <div>PTY LTD</div>				<div>Architect</div> <div>stanisic architects</div>				<div></div> <div>S&G CONSULTANTS PTY LTD</div> <div>SUITE 311, LEVEL 3</div> <div>480 PACIFIC HIGHWAY</div> <div>ST. LEONARDS, N.S.W. 2065</div> <div>T: +61 2 8883 4239</div> <div>Email: office@sgce.com.au</div> <div>Web: www.sgce.com.au</div> <div>A.B.N. 21 118 222 530</div>				<div>PROJECT</div> <div>Lot 101 DP1267563 SOMME AVENUE</div> <div>EDMONDSON PARK</div> <div>STORMWATER DRAINAGE DESIGN</div>				<div>Status</div> <div>PRELIMINARY</div> <div>NOT FOR CONSTRUCTION</div> <div>Drawing Title</div> <div>STORMWATER DRAINAGE DESIGN</div> <div>GROUND FLOOR PLAN</div> <div>BUILDING C</div>				<div>Project No.</div> <div>20240006</div> <div>Set No. - Drg No.</div> <div>S01-SW312</div> <div>Revision No.</div> <div>A</div>			
Discipline	Drawing Title and Number	Date	Rev.																																																																																												
ARCH	STRUCT																																																																																														
MECH																																																																																															
ELEC																																																																																															
HYD																																																																																															
FIRE																																																																																															
LANDS																																																																																															
CIVIL																																																																																															
SURVEY																																																																																															
DRAWN	DATE																																																																																														
ES	23.02.24																																																																																														
CHECKED	DATE																																																																																														
SH	23.02.24																																																																																														
DESIGNED	DATE																																																																																														
ES	23.02.24																																																																																														
VERIFIED	DATE																																																																																														
SH	23.02.24																																																																																														
APPROVED	DATE																																																																																														
SH	23.02.24																																																																																														

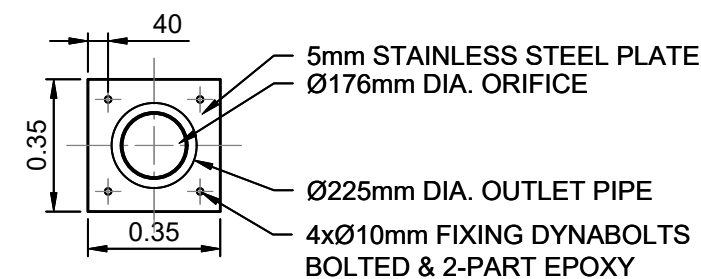
[illegible]



										Reference Coordination Drawing				Quality Control		 ENGINEERS AUSTRALIA Chartered Professional Engineer MEMBER		Scales		Client		Architect		 S&G CONSULTANTS PTY LTD SUITE 311, LEVEL 3 480 PACIFIC HIGHWAY ST. LEONARDS, N.S.W. 2065 T: +61 2 8883 4239 Email: office@sgce.com.au Web: www.sgce.com.au A.B.N. 21 118 222 530		PROJECT Lot 101 DP1267563 SOMME AVENUE EDMONDSON PARK STORMWATER DRAINAGE DESIGN		Status PRELIMINARY NOT FOR CONSTRUCTION Drawing Title STORMWATER DRAINAGE DESIGN DETAILS SHEET 01 OF 02	
										Discipline	Drawing Title and Number	Date	Rev.	DRAWN	DATE	WARNING: THE DESIGNS, DRAWINGS, SPECIFICATIONS AND THE COPYRIGHT HEREIN REMAIN THE SOLE INTELLECTUAL PROPERTY OF S&G CONSULTANTS PTY LTD AND MUST NOT BE USED, COPIED, ALTERED OR REPRODUCED WHOLLY OR IN PART IN ANY FORM WITHOUT THE WRITTEN CONSENT OF S&G CONSULTANTS PTY LTD DIMENSIONS NOT SHOWN TO BE CHECKED ON SITE. DO NOT SCALE OF THIS DRAWING. POSITIONS OF AUTHORITIES MAINS AND/OR EXISTING SERVICES ARE TO BE CHECKED PRIOR TO COMMENCEMENT OF WORK. REPORT ANY DISCREPANCIES TO THE CONSULTING ENGINEER FOR DECISION/CLARIFICATION BEFORE PROCEEDING WITH THE WORK. THIS DRAWING IS TO BE READ IN CONJUNCTION WITH THE SPECIFICATIONS AND OTHER CONSULTANTS' DRAWINGS.		0m 0.1 0.2 0.3 0.4 0.5 SCALE 1:10 ON ORIGINAL SIZE		CROATIA 88		stanisic architects		PROJECT		Status			
										ARCH				CHECKED	DATE			0m 0.2 0.4 0.6 0.8 1.0 SCALE 1:20 ON ORIGINAL SIZE		DEVELOPMENT		Drawing Title		Set No.					
										STRUCT				SH	DATE			0m 0.5 1 1.5 2 2.5 SCALE 1:50 ON ORIGINAL SIZE		PTY LTD		EDMONDSON PARK		Revision No.					
										MECH				DESIGNED	DATE					STORMWATER DRAINAGE DESIGN		20240006		S01-SW401					
										ELEC				ES	DATE					STORMWATER DRAINAGE DESIGN		A							
										HYD				VERIFIED	DATE														
										FIRE				SH	DATE														
										LANDS				APPROVED	DATE														
										CIVIL				SH	DATE														
										SURVEY																			
										Issuer internal sequence and revision history 1-preliminary 2-development application 3-construction certificate 4-tender 5-construction 6-other																			
										A DEVELOPMENT APPLICATION P01 PERLIMINARY ISSUE Issue Last revision title By Date Status																			

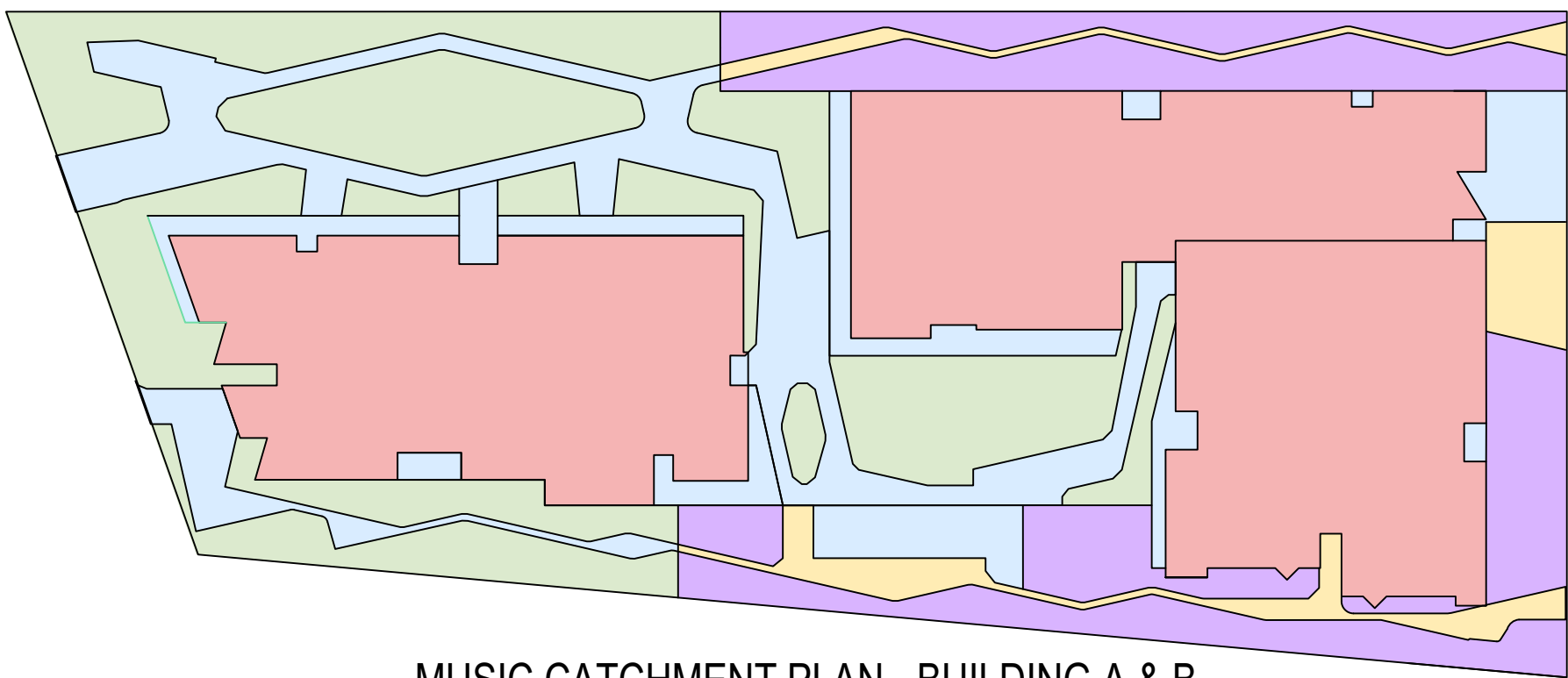


LOT AREA (m2)	PRE-DEV IMPERVIOUS (%)	POST-DEV IMPERVIOUS (%)	STORM (YR)	PRE-DEV FLOW (m3/s)	POST-DEV FLOW (m3/s)	PIPE OUTFLOW (m3/s)	WEIR OUTFLOW (m3/s)	BYPASS FLOW (m3/s)	TOTAL PSD (m3/s)	OSD VOLUME (m3)
5000	0	62.1	5	0.070	0.112	0.055	N/A	0.015	0.070	56.13
			20	0.122	0.166	0.072	N/A	0.024	0.096	
			100	0.173	0.220	0.083	0.050	0.034	0.167	

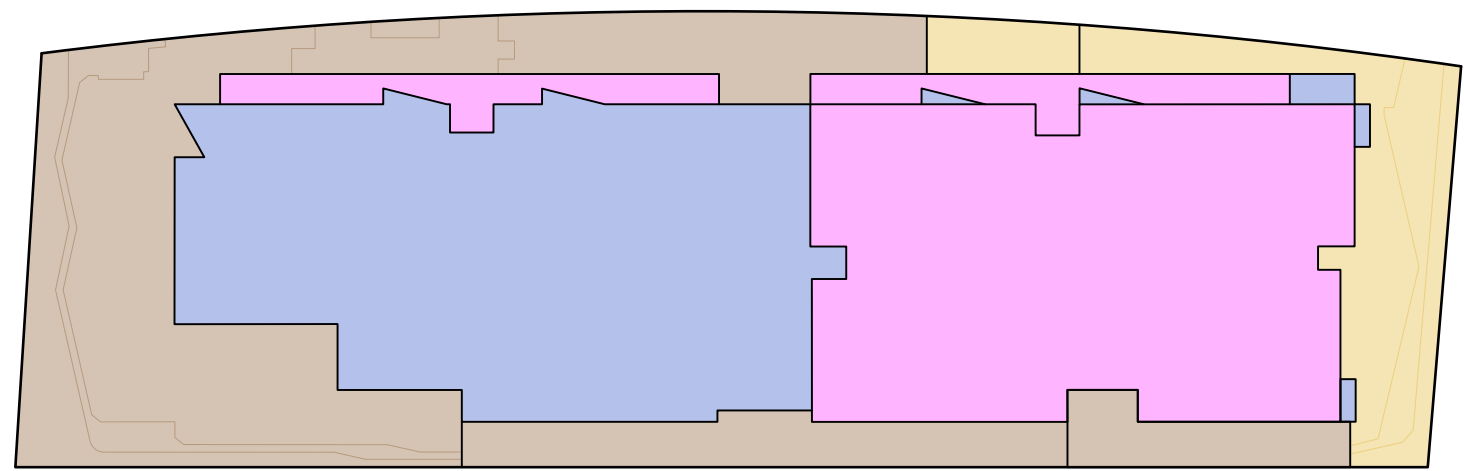
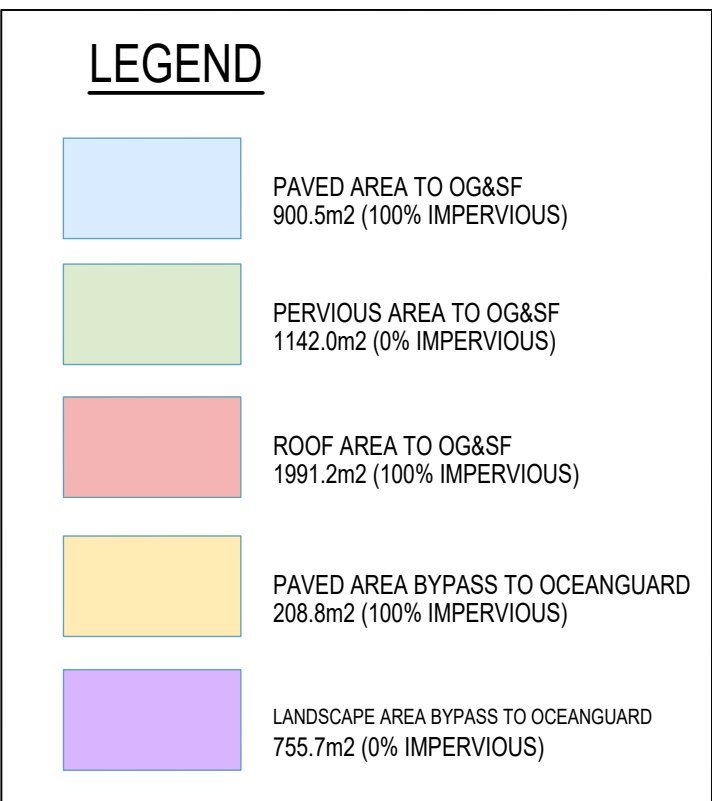


LOT AREA (m2)	PRE-DEV IMPERVIOUS (%)	POST-DEV IMPERVIOUS (%)	STORM (YR)	PRE-DEV FLOW (m3/s)	POST-DEV FLOW (m3/s)	PIPE OUTFLOW (m3/s)	WEIR OUTFLOW (m3/s)	BYPASS FLOW (m3/s)	TOTAL PSD (m3/s)	OSD VOLUME (m3)
2724	0	76	5	0.038	0.064	0.031	N/A	0.007	0.038	62.99
			20	0.066	0.094	0.041	N/A	0.012	0.053	
			100	0.094	0.126	0.050	0.014	0.017	0.081	

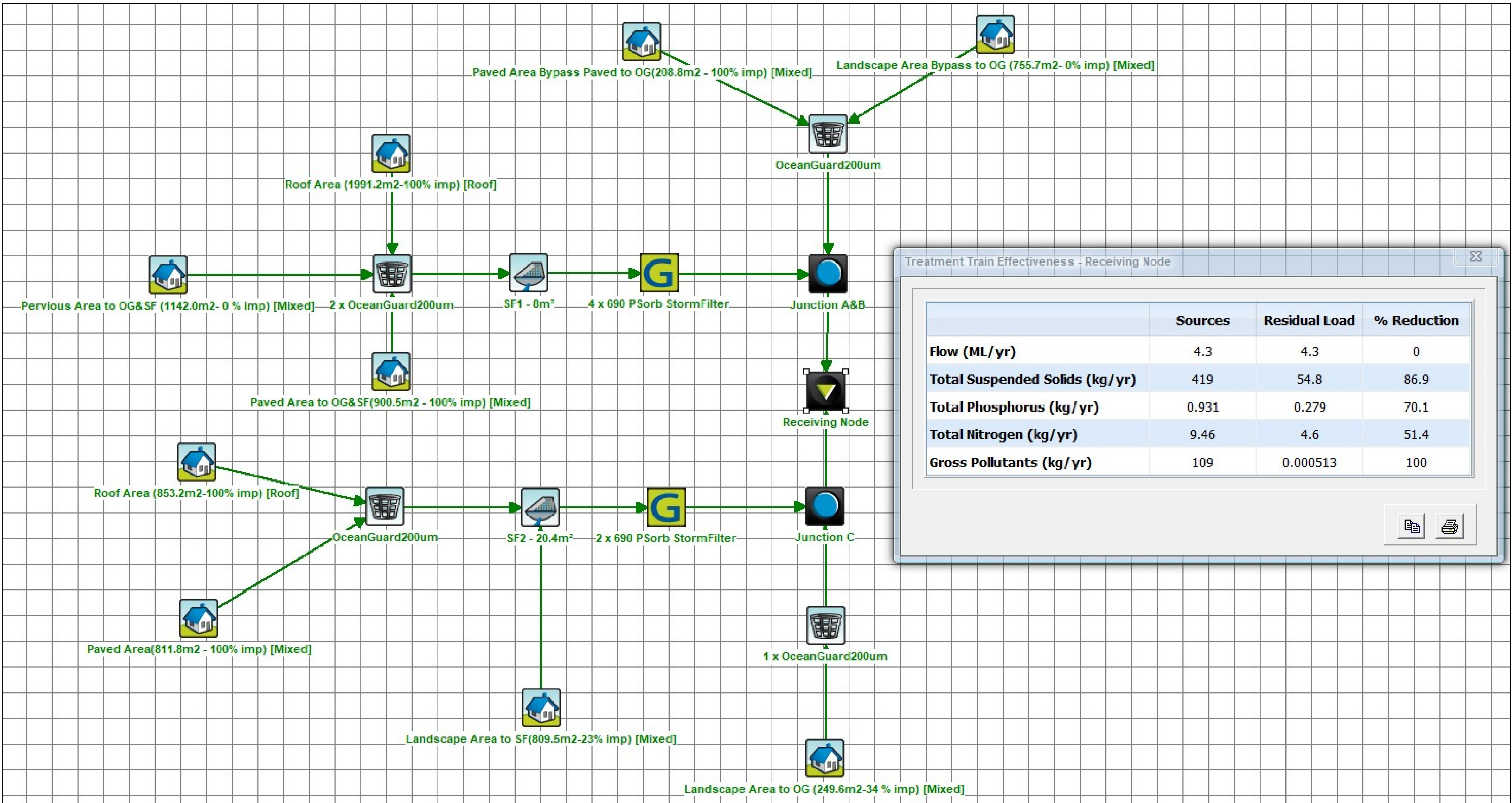
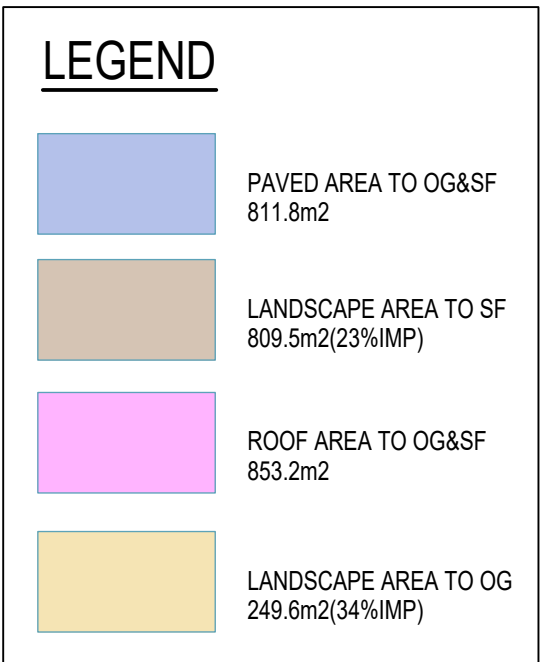
TSS=80%
TP=45%
TN=45%




MUSIC CATCHMENT PLAN - BUILDING A & B
NOT TO SCALE

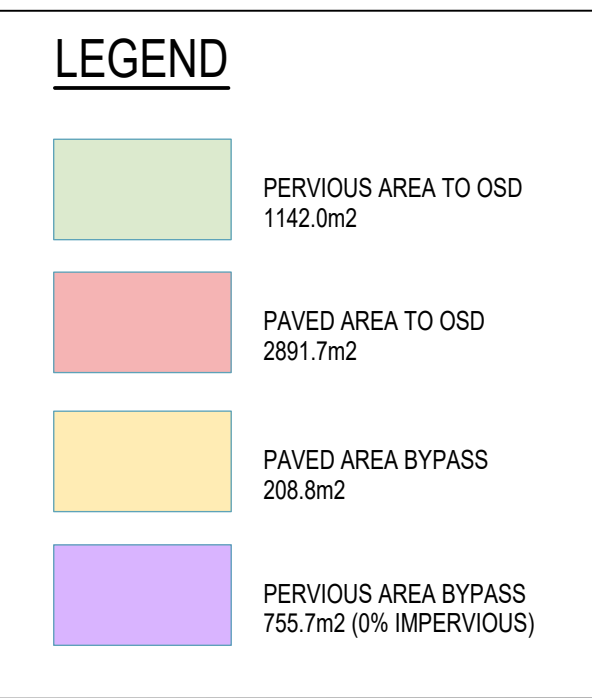


MUSIC CATCHMENT PLAN - BUILDING C
NOT TO SCALE



MUSIC RESULTS

				Reference Coordination Drawing				Quality Control		<div><div>ENGINEERS AUSTRALIA</div><div>Chartered Professional Engineer</div><div>MEMBER</div></div> <div>WARNING: THE DESIGNS, DRAWINGS, SPECIFICATIONS AND THE COPYRIGHT HEREIN REMAIN THE SOLE INTELLECTUAL PROPERTY OF S&G CONSULTANTS PTY LTD AND MUST NOT BE USED, COPIED, ALTERED OR REPRODUCED WHOLLY OR IN PART IN ANY FORM WITHOUT THE WRITTEN CONSENT OF S&G CONSULTANTS PTY LTD.</div> <div>DIMENSIONS NOT SHOWN TO BE CHECKED ON SITE. DO NOT SCALE OF THIS DRAWING. POSITIONS OF AUTHORITIES MAINS AND/OR EXISTING SERVICES ARE TO BE CHECKED PRIOR TO COMMENCEMENT OF WORK. REPORT ANY DISCREPANCIES TO THE CONSULTING ENGINEER FOR DECISION/CLARIFICATION BEFORE PROCEEDING WITH THE WORK. THIS DRAWING IS TO BE READ IN CONJUNCTION WITH THE SPECIFICATIONS AND OTHER CONSULTANTS' DRAWINGS.</div>	Scales		Client		Architect		<div><div><div></div><div>S&G CONSULTANTS PTY LTD SUITE 311, LEVEL 3 480 PACIFIC HIGHWAY ST. LEONARDS, N.S.W. 2065 T: +61 2 8883 4239 Email: office@sgce.com.au Web: www.sgce.com.au</div></div><div>A.B.N. 21 118 222 530</div></div>	PROJECT			Status		
				Discipline Drawing Title and Number Date Rev.				DRAWN DATE			CROATIA 88 DEVELOPMENT PTY LTD		stanisic architects		Lot 101 DP1267563 SOMME AVENUE			PRELIMINARY NOT FOR CONSTRUCTION					
				ARCH				ES 23.02.24							EDMONDSON PARK			Drawing Title					
				STRUCT				CHECKED DATE										STORMWATER GRADING DESIGN			STORMWATER DRAINAGE DESIGN		
				MECH				SH 23.02.24										MUSIC CATCHMENT PLAN & DETAILS					
A DEVELOPMENT APPLICATION				ES		23.02.24		02 ELEC			DESIGNED DATE												
P01 PERLIMINARY ISSUE				ES		22.02.24		01 HYD			ES 23.02.24												
Issue Last revision title				By		Date		Status			VERIFIED DATE												
								FIRE			SH 23.02.24												
								LANDS			SH 23.02.24												
								CIVIL		APPROVED DATE													
								SURVEY		SH 23.02.24													
																</							



OSD CATCHMENT PLAN - BUILDING A & B
NOT TO SCALE



OSD CATCHMENT PLAN - BUILDING C
NOT TO SCALE

				Reference Coordination Drawing				Quality Control		ENGINEERS AUSTRALIA Chartered Professional Engineer		Scales		Client		Architect		<div><div>S&G CONSULTANTS PTY LTD SUITE 311, LEVEL 3 480 PACIFIC HIGHWAY ST. LEONARDS, N.S.W. 2065 T: +61 2 8883 4239 Email: office@sgce.com.au Web: www.sgce.com.au A.B.N. 21 118 222 530</div></div>			PROJECT			Status		
				Discipline Drawing Title and Number Date Rev.				DRAWN DATE ES 23.02.24 CHECKED DATE SH 23.02.24 DESIGNED DATE ES 23.02.24 VERIFIED DATE SH 23.02.24 APPROVED DATE SH 23.02.24		WARNING: THE DESIGNS, DRAWINGS, SPECIFICATIONS AND THE COPYRIGHT HEREIN REMAIN THE SOLE INTELLECTUAL PROPERTY OF S&G CONSULTANTS PTY LTD AND MUST NOT BE USED, COPIED, ALTERED OR REPRODUCED WHOLLY OR IN PART IN ANY FORM WITHOUT THE WRITTEN CONSENT OF S&G CONSULTANTS PTY LTD DIMENSIONS NOT SHOWN TO BE CHECKED ON SITE. DO NOT SCALE OF THIS DRAWING. POSITIONS OF AUTHORITIES MAINS AND/OR EXISTING SERVICES ARE TO BE CHECKED PRIOR TO COMMENCEMENT OF WORK. REPORT ANY DISCREPANCIES TO THE CONSULTING ENGINEER FOR DECISION/CLARIFICATION BEFORE PROCEEDING WITH THE WORK. THIS DRAWING IS TO BE READ IN CONJUNCTION WITH THE SPECIFICATIONS AND OTHER CONSULTANTS' DRAWINGS.		CROATIA 88 DEVELOPMENT PTY LTD		stanisic architects		Lot 101 DP1267563 SOMME AVENUE EDMONDSON PARK STORMWATER GRADING DESIGN OSD CATCHMENT PLAN & DETAILS STORMWATER DRAINAGE DESIGN					PRELIMINARY NOT FOR CONSTRUCTION					
A DEVELOPMENT APPLICATION ES 23.02.24 02 P01 PERLIMINARY ISSUE ES 22.02.24 01 Issue Last revision title By Date Status				ELEC HYD FIRE LANDS CIVIL SURVEY												Drawing Title			Project No. Set No. - Drg No. Revision No.							
Issuer internal sequence and revision history																		Grid Datum Sheet			20240006 S01-SW502 A					
1-preliminary 4-tender				2-development application 5-construction				3-construction certificate 6-other																		